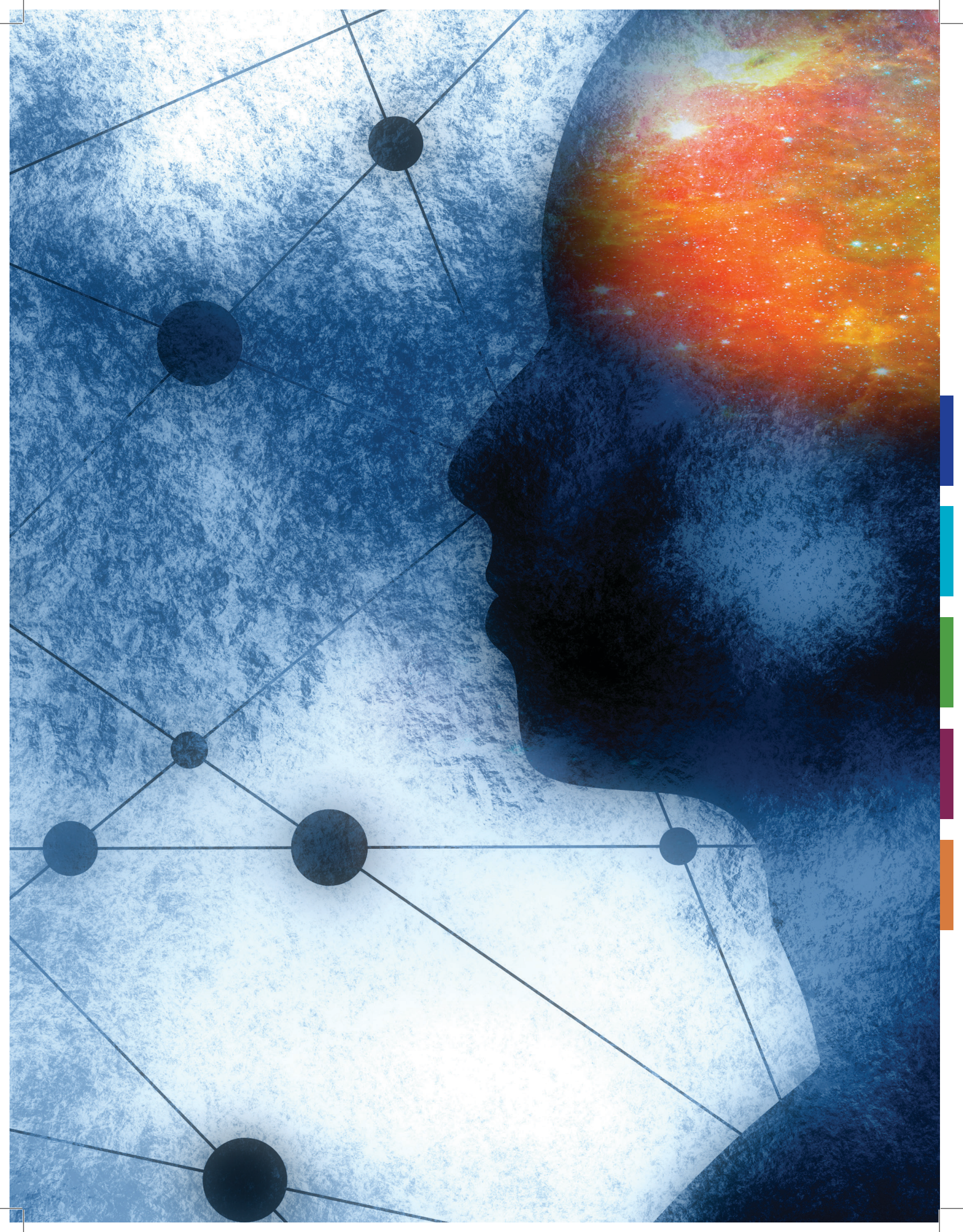




2023–2024 Impact Report



The value of CMHA to its members and persons served by its members: CMHA accomplishments in 2023–2024

Member organizations of the Community Mental Health Association of Michigan (CMHA) and the persons served by and stakeholders of those member organizations receive many important benefits, centered around the five strategy platforms of CMHA:



Government relations and advocacy

Policy and fiscal analysis

Direct dialogue and co-development to foster sound state- and national-level policy and practice

Education and training

Media and public relations



Government Relations and Advocacy

CMHA's government relations and advocacy work is composed of many components including:

- Testifying on behalf of membership in various legislative settings, serving as the spokesperson for the Association's members
- Tracking legislative, policy and appropriations changes impacting our membership, including providing comments on behalf of members on state policy changes
- Developing and maintaining relationships with key legislative & administration leaders, developing trust and credibility, serving as sound content source and advocate
- Regularly communicating with CMHA members on a range of legislation and policy issues:
 - » Weekly Update (CMHA's electronic newsletter)
 - » CMHA's electronic Action Alert system
 - » Speaking at local CMH/PIHP/Regional board meetings
 - » Developing infographics and talking points on key issues important to our members
- Managing the CMH Political Action Committee (PAC) & Education & Advocacy Fund
- Coordinating efforts and message with a well-recognized multi-client lobbying firm on contract with CMHA

Examples of advocacy successes by CMHA over the past year include:

Legislation

CMHA pushed bills recently signed into law by Governor Gretchen Whitmer:

- Senate Bill 27 (Public Act 41 of 2024 codifies, in Michigan law, the federal mental health and substance use disorder parity law, thus allowing Michigan to enforce of mental health parity.
- Senate Bill 227 (Public Act 50 of 2024) amended the Childcare Licensing Act to allow, to prevent imminent harm to the child/adolescent or others, emergency physical management/therapeutic de-escalation in specified children's residential settings.
- House Bills HB 4213, 4579, 4580 & 4131 (Public Acts 51, 52 & 53, 54 of 2024) require telemedicine coverage for SUD and behavioral health services and require equitable coverage and reimbursement for telehealth services compared to in-person.

Appropriations

CMHA has successfully advocated for the following items:

- Increased Direct Care Worker (DCW) wages by \$3.40 over these three years.
- The FY 24 state budget included \$2.5 million for recruitment and retention programs for behavioral health professionals.
- FY24 budget included \$5.0 million to provide grants to individuals who agree to enter into an accelerated (one year) social work degree program and to work for at least 2 years within the public behavioral health sector after completion of their degree.
- During these three years, the CCBHC appropriations line was increased to expand the number of CCBHC State Demonstration provider organizations/sites to 34 sites.

Regulations

- Successfully Advocated in partnership with MAC and MI Sherrif's Association for MDHHS to submit an 1115 Waiver to expand **Medicaid Coverage for Incarcerated Individuals**, which would provide Medicaid-funded health care supports for incarcerated individuals in preparation for reentry into society. Services would be provided in the final 90 days of incarceration. MDHHS waiver was approved in December of 2024, with an implementation date set for 2027.
- **Fostering Administrative Efficiencies in Michigan's Public Mental Health System**, CMHA , with funding from the Michigan Health Endowment Fund and in partnership with MDHHS and Public Sector Consultants (PSC) examined the administrative and paperwork demands placed on Michigan's public mental health system and recommending the elimination of those demands not tied to federal regulations, the provision of accessible and quality mental health services and supports to Michiganders or to the fiscal and operational integrity of Michigan's public mental health system.



Policy and Fiscal Analysis

The CMHA carries out a number of policy and fiscal analysis initiatives with the aim of fostering wise decision making and advocacy around a range of issues that impact the members of the Association and the persons and communities served by the Association's members

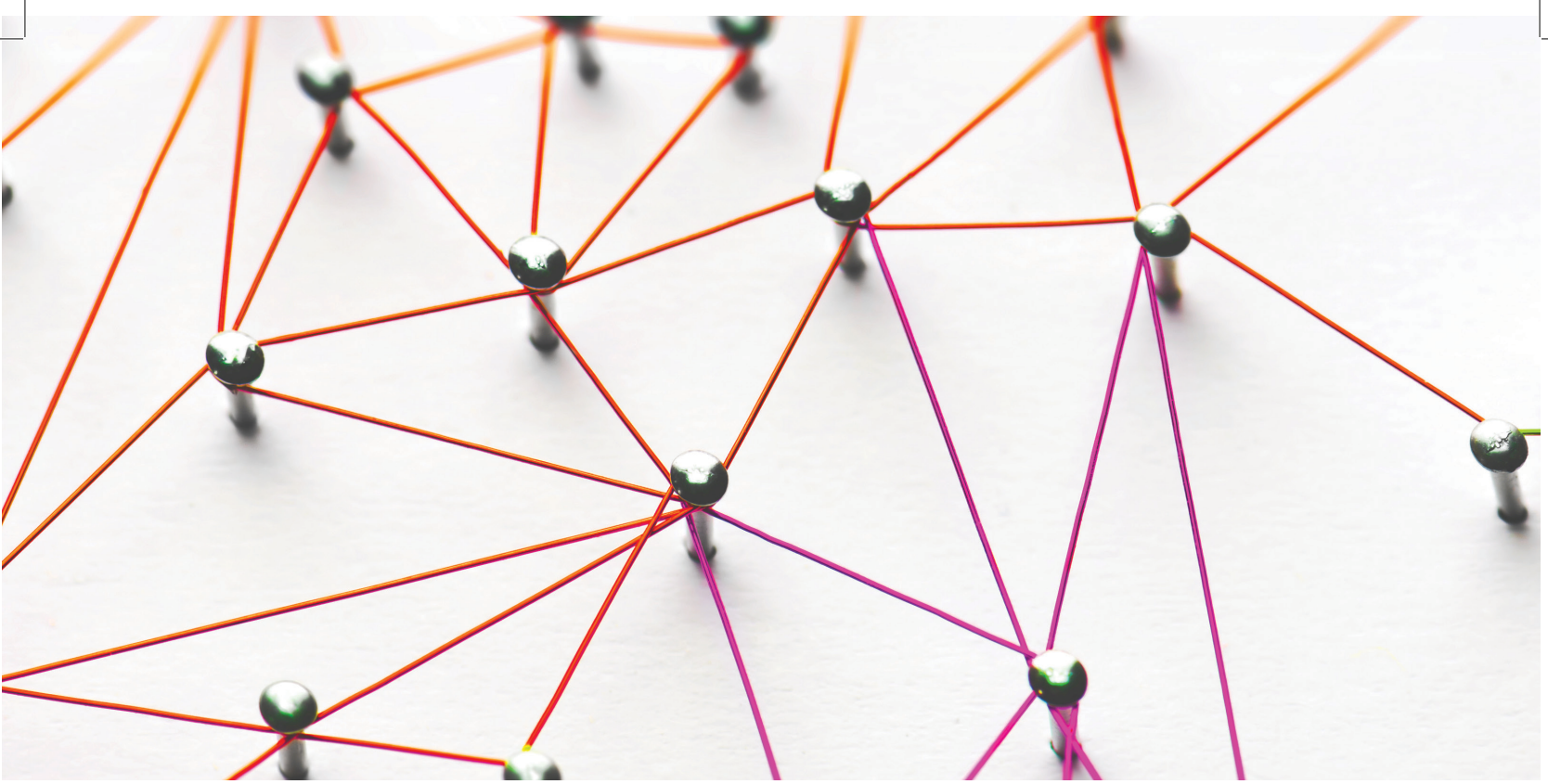
Examples of this work by CMHA over the past several years include:

1. White papers, from the Association's Center for Healthcare Integration and Innovation (CHI2), on topics of vital importance of the Association's members.
 - » Healthcare Integration and Coordination – 2023-2024 Update: Survey of Initiatives of Michigan's Public Mental Health System
 - » Healthcare Integration and Coordination – 2023-2024 Update: Survey of Initiatives of Michigan's Public Mental Health System
 - » Behavioral Healthcare Workforce Survey Analysis
 - » Investigation of Michigan Residents Crossing Wisconsin Border to Seek Inpatient Mental Healthcare

These and other CHI2 white papers can be found at the CMHA CHI2 webpage.



2. In-depth and accessible fiscal analysis related to a number of financing and policy issues:
 - » Monthly analysis of actual Medicaid revenues to the system in comparison to projected revenue
 - » Fiscal analysis in support of effort to raise the wages of Michigan's Direct Care Workers
3. Analysis of outcomes, in 2023 and 2024, of Michigan's Certified Community Behavioral Health Clinics (CCBHCs)
4. Analysis and recommendations related to:
 - » Coordination of care between Michigan's public mental health and child welfare systems
 - » Approaches to closing the behavioral health workforce gap
 - » Recommendations to reduce the administrative and paperwork burden borne by Michigan's public mental health system and those served by that system
5. In partnership with the National Association of Social Workers (NASW)- Michigan Chapter and the Michigan Association of Deans and Directors of Graduate Schools of Social Work, through a project funded by the Michigan Health Endowment Fund, carried out research on the value of and efforts to eliminate the written test from the social work licensure requirements, in Michigan and across the country.



Direct dialogue and co-development to foster sound state- and national-level policy and practice

CMHA, in partnership with its members and key policymakers, works to foster sound policy and practice standards through active dialogue with key policy makers and CMHA staff on a wide range of issue at both state and national levels.

Examples of this work by CMHA over the past two years include:

1. Formed the Rural and Frontier Caucus to foster the development of policies and practices designed to meet the unique needs and strengths of Michigan's rural and frontier communities and the CMHA member organizations which serve them.
2. Formed the Certified Community Behavioral Health Clinics (CCBHC) Caucus to ensure that the collective voice, expertise, and needs of Michigan's CCBHCs are directly involved in policy and practice setting for Michigan's emerging CCBHC system.
3. Active dialogue with MDHHS leadership on wide range of issues and policy initiatives, with the aim of ensuring the strength of Michigan's public mental health system & the health of those served by this system.
4. In partnership with MDHHS, CMHA members, persons served, Public Sector Consultants, and a range of stakeholders designed and implemented an effort to reduce and, where possible, eliminate administrative and paperwork burdens borne by Michigan's public mental health system and those served by that system – an effort funded by the Michigan Health Endowment Fund.
5. In partnership with the National Association of Social Workers – Michigan Chapter and the Michigan Association of Deans and Directors of Graduate Schools of Social Work, designed and implemented

a series of multi-state studies and change management strategies to foster a practice-based, as opposed to test-based, path to social work licensure.

6. CMHA Weekly Update, CMHA's electronic newsletter, providing over 1,600 readers with up-to-date information on a range of topics: News related to Association's members and CMHA, state legislative and policy activity, federal legislative policy activity, educational offerings sponsored by the Association and other reliable sources.
7. Connections the electronic journal that provides a first-person perspective to the lives of persons served by Michigan's public mental health system.
8. The CMHA Persons Served Advisory Group, made up of and led by persons served by the public mental health system, works to ensure that persons served have a strong voice in guiding CMHA in its policy, practice, and legislative advocacy work.
9. Built and sustained strong partnership role with the major statewide advocacy organizations: NAMI Michigan, Arc Michigan, Association for Children's Mental Health, Mental Health Association in Michigan, Disability Rights Michigan, Michigan Disability Rights Coalition, Autism Alliance of Michigan.
10. Developed and maintained active membership and, often, leadership in coalitions, recruiting Association members to serve as Association representatives to a wide range of state level coalitions including: Direct Care Wage Coalition, Michigan Health Endowment Fund's Behavioral Health Stakeholders Group, With One Voice and Kevin's Song.
11. Actively participated and/or recruited Association members to serve as Association representatives to number of workgroups, in partnership with the Michigan Departments of Health and Human Services, Education, Labor and Economic Opportunity, and Licensing and Regulatory Affairs. MDHHS, MDE, and LEO workgroups, including: School-based mental health (31n) Advisory Group, Incompetent to Stand Trial (IST) workgroup, Assisted Outpatient Treatment (AOT) workgroup, 988 Advisory Group, Crisis Stabilization Unit Advisory Group, Children's Special Health Needs/CMH collaboration workgroup, Medicaid Ratesetting Workgroup, subcommittees of the Governor's Mental Health Diversion Commission, school-based mental health (31n) Advisory Group, Michigan's Medical Care (Medicaid) Advisory Committee Medical Services Advisory Group.
12. Continued strong partnerships with national organizations, including:
 - » National Council for Mental Wellbeing: Link to national legislative and policy efforts, regular dialogue with the National Council's technical assistance centers on CCBHC, and around Medicaid advocacy, State Association Executives, and rural issues.
 - » National Association of County Behavioral Health and Developmental Disability Directors (NACBHDD): link to national legislative and policy efforts specifically linked to the work of county-based system. Active involvement on the Directors of State Association committee and the NACBHDD Board.
13. Negotiated, through the Association's CMH Contract Negotiation Team, on behalf of the CMH system, the CMH contract with MDHHS – leveraging the solidarity across the membership that leads to better outcomes to these negotiations.
14. Met, in communities across the state, with the Boards of directors and/or senior leadership of Association members on a range of issues, including state and national developments.

Education and Training

CMHA's education and training efforts, unlike many state associations, are broad in scope and audience reach, deep in the level of knowledge provided to participants, and diverse in their content.

CMHA has a team of skilled education and training planners who provide CMHA members with access to some of the state's, Great Lakes region's, and nation's leading subject matter experts.

Examples of this work by CMHA over during 2023 and 2024 include:

1. Organized and hosted over 275 trainings and conferences each year reaching over 16,000 individuals on: a wide range of evidence-based and promising clinical practices; financial, structural, and partnership, innovations; approaches to empowering persons served; ensuring recipient rights, and board governance.
2. Continued long-standing cutting edge educational partnership with the Michigan Department of Health and Human Services. This partnership provided over 165 trainings and seminars attended by over 10,500 Michigan clinicians, clinical and organizational leaders. This partnership has made Michigan a leader in the joint design and operation of a sustainable system for providing training to practitioners across the state on a wide range of evidence-based and promising practices.
3. Continuing education (CE) credits are essential for professional to retain their licensure, enhance skills and stay current with the latest best practices. CMHA offers tens of thousands of CEs to a wide range of disciplines and certification systems: social work, substance use disorders, nursing, continuing medical education, CHES, SCECH, gambling disorders, Michigan continuing judicial education, certified peers support specialists, and certified peer recovery coaches, to name a few.
4. Provided access to high quality educational offerings – via virtual conferences, webinars, and virtual roundtables – at a discount to CMHA members, provided by the National Council for Mental Wellbeing (NatCon) and the National Association of County Behavioral Health and Developmental Disability Directors (NACBHDD's Legislative and Policy Conference).
5. Continued with well-received Boardworks series designed to equip the Boards of Directors of CMHA member organizations to be effective board members.
6. Cooperatively designed and implemented a series of partnership development sessions (Moving the Torch and Passing the Torch) between the state's CMHs and the child welfare staff of the MDHHS offices throughout the state.
7. Operated the Michigan Certified Community Behavioral Health Clinic (CCBHC) Technical Assistance Center to support CMHA member organizations applying to become CCBHC sites under Michigan's CCBHC State Demonstration initiative and those who are CCBHC State Demonstration sites.
8. Educational partnerships with:
 - a. SAMHSA-funded Great Lakes Mental Health Technology Transfer Center (MHTTC) and the newly formed Center for Mental Health Implementation Support
 - b. Central Michigan University Medical School
 - c. Michigan State Police, Michigan Department of Education, and MDHHS



Media and Public Relations

CMHA, in partnership with the CMHA Public Relations Committee and the public relations firm of Lambert, carries out a substantial number of media-relations efforts focused around issues of focus by CMHA and its members.

Examples of this work by CMHA over the past year include:

1. Strong media presence (carried out in collaboration with Lambert (CMHA's longtime public relations partner) and the CMHA Public Relations Committee.
 - » Editorials on a range of mental health issues
 - » Press releases on key events, legislative and policy positions
 - » Regular social media posts on a range of mental health topics
 - » Infographics on the strengths of and policy analysis and recommendations by the public mental health system

These stories are found on CMHA's Newsroom webpage.

2. Electronic media messages, jointly developed by CMHA and Lambert as banner advertisements to run, daily, on both of Michigan's capitol news services, MIRS and Gongwer.
3. Partnership of CMHA and a number of CMHA members with the Issue Media Group (IMG), built around the concept of "solutions journalism" – providing dozens of news stories, annually, centered around the innovative and concrete ways that CMHA member organizations are serving their communities.



Alan Bolter

Associate Director
abolter@cmham.org

Sarah Botruff

Director of Education and Training
sbotruff@cmham.org

Robert Sheehan

Chief Executive Officer
rsheehan@cmham.org

The Community Mental Health Association of Michigan is the state association representing Michigan's public Community Mental Health (CMH) centers, the public Prepaid Inpatient Health Plans (PIHP – public health plans formed and governed by CMH centers) and the private providers within the CMH and PIHP provider networks. **FOR MORE INFORMATION, PLEASE VISIT CMHAM.ORG OR CALL 517-374-6848.**